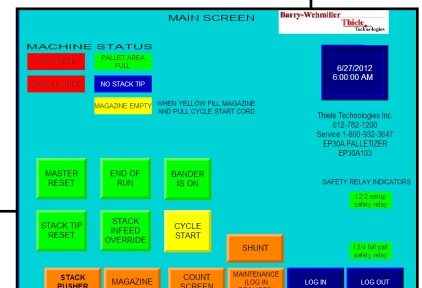
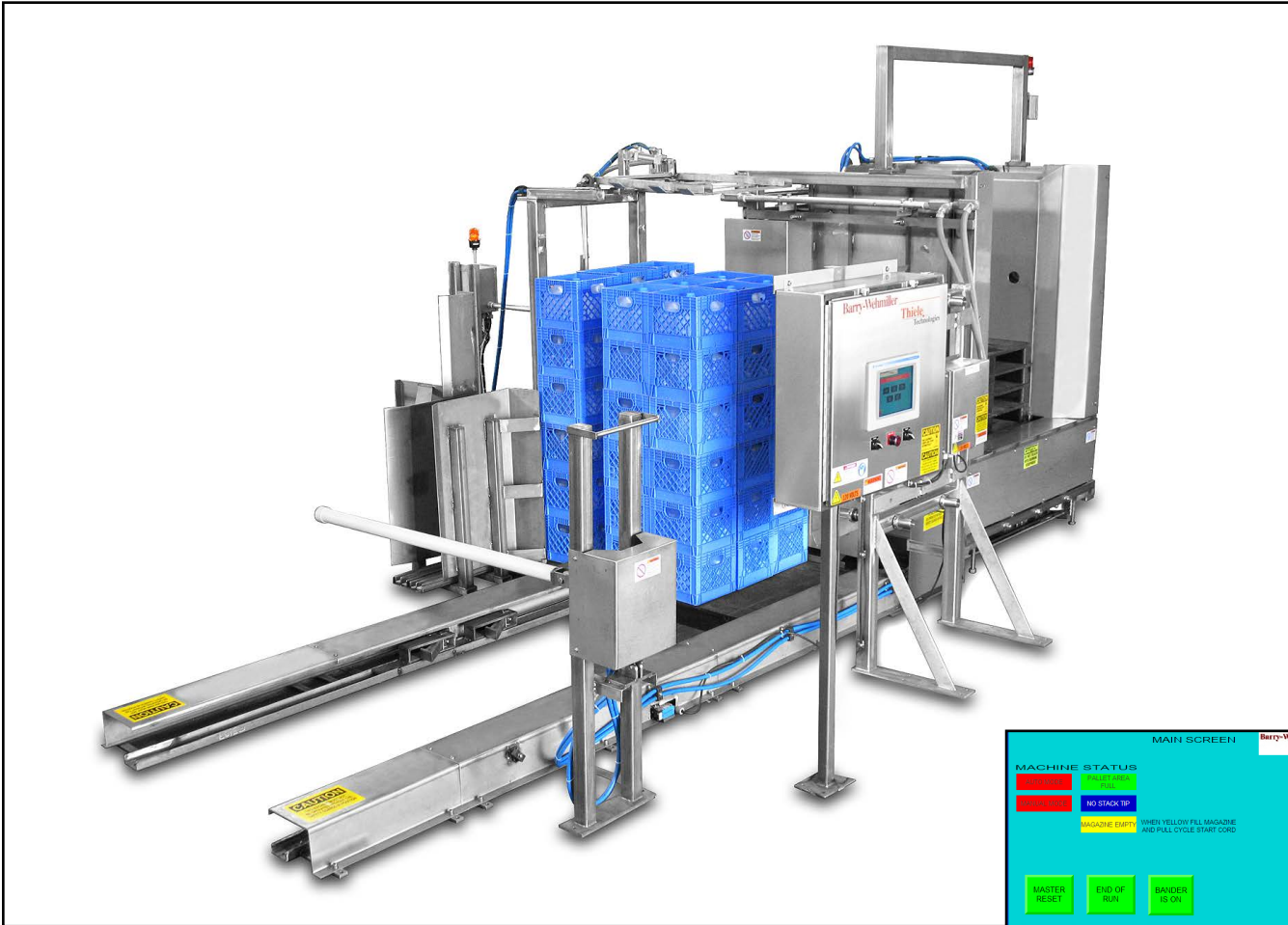


Automatic Floor Level Dairy Palletizer Ratchet Palletizer



Key Features

- Hydraulic operation
- PLC controlled
- Fully automatic
- Painted mild steel construction
- On-floor operation
- Touchscreen with diagnostic history
- In-line or 90° pallet magazine
- Empty and full pallet load/unload with fork truck or pallet jack
- 13" x 13" or 13" x 19" plastic cases; handles 40" x 40" and 40" x 48" plastic or wood pallets
- Compatible with automatic banders and wrappers

Automatic Floor Level Dairy Palletizer

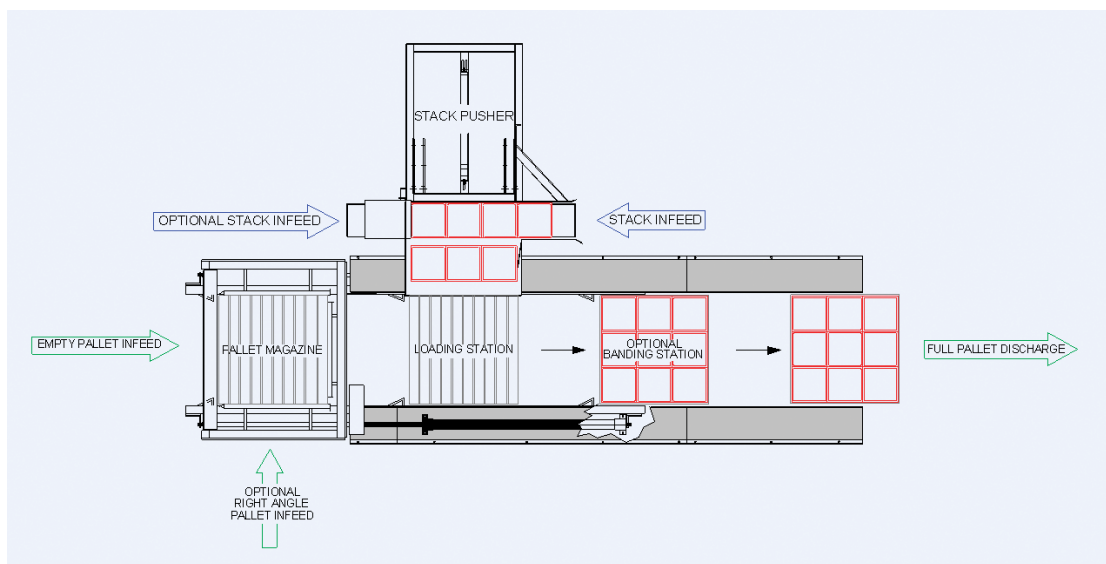
Ratchet Palletizer

The Ratchet Palletizers operate on a simultaneous cycle for optimal speeds. On-floor ratchets retrieve empty pallets from the pallet magazine and forward them to the loading station. Full dairy case stacks are fed into the pusher, stabilized and pushed on to the empty pallet. The ratchets move the full pallet to an optional banding or stretch wrapping station while moving the next empty pallet to the loading station. When full pallet accumulation is required, the full pallet will progress through additional stations.

Optional Features

- Stainless steel construction
- Stack pass-through feature on palletizer
- Right angle pallet infeed and pick-up
- Additional stations for pallet accumulation
- Semi-automatic model available
- Right-hand or left-hand pallet travel

Specifications	
Production Speed	
Up to 1.75 pallets/min	
Electrical Requirements	
Control Power	120 volts, 1 phase, 60 Hz
Control Circuit	120 VAC
Electrical Service	20 amp supply line
Hydraulic Requirements	
Operating Pressure	800 psi
Consumption	22 gal/min



All sales are subject to our prevailing terms and conditions. Illustrations and specifications are subject to change without notice. Machines shown without guards are for illustrative purposes only. Guards are supplied and must be in place before operation.