

Thiele Technologies

Automatic, High Speed Bagging System UltraStar™



Key Features

- Dual bag stations for higher speed and improved productivity
- Automatic discharge of unsatisfactory bags
- Handles most paper, polyethylene and woven polypropylene bags
- Servo drive for fast, smooth & precise mechanical operation
- Integral sealers for paper, poly or polywoven
- Fully integrated PLC control system with common HMI for scale and bagger available

Barry-Wehmiller

Thiele
Technologies

BPMC

Streamfeeder

EDMEYER

NIGRELLI

HUDSON-SHARP

Salwasser

T I S M R

SWF

Automatic, High Speed Bagging System

UltraStar™

The UltraStar is a high speed bagging system for packaging 20-110 lbs. (10-50 kg) of product in multi-wall paper, polywoven and polypropylene bags at speeds up to 38 bags per minute. Automatic discharge of unsatisfactory bags, whether unopened or improperly sized, and 3-5 minute tool-less changeover are among the many advanced technologies featured.

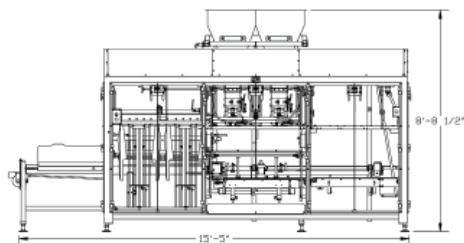
The UltraStar offers the packer of large bags the production enhancing features formerly found only on packaging systems for small bags. The UltraStar system is ideal for industries where speed and line efficiencies are critical. These industries include pet food, sugar, salt, seed, fertilizer, rice, and petro-chemical resin.

The UltraStar eliminates spillage, reduces downtime, provides easier troubleshooting, and minimizes dusting for greater productivity.

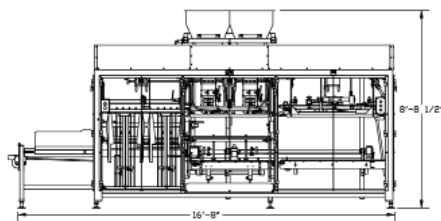
Additional Features

- 3-5 minute tool-less changeover
- Ethernet capability for network communication available
- Easy to use fault & diagnostic displays
- Fully integrated PLC control system with common HMI for scale and bagger available

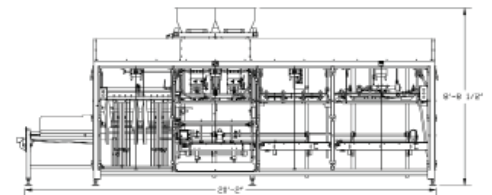
Specifications	
Production Speed	
Up to 38 bags per minute	
Bag Sizes	
Face Width	11" to 19" (279mm to 483mm)
Length	
PBOM	15" to 41" (381mm to 1041mm)
SOM	14" to 40" (355mm to 1016mm)
Poly	14" to 40" (355mm to 1016mm)
Woven Poly	14" to 40" (355mm to 1016mm)
Electrical Requirements	
Input Power	230/460V, 3 phase, 60 hz
Control Circuit	24 Volt DC from internal power supply
Current Draw	230 volt (20 amps) 460 volt (10 amps)
Air Requirements	
Operating Pressure	80 psi (5.4 atm)
Line Pressure	90 psi (6.1 atm)
Air Use per Cycle	2.0 scf (55 liters) free air per cycle
Approximate Shipping Weight	
Bagger	4,500 lbs (2041 kg)
Bag Magazine	500 lbs (227 kg)
Closing Conveyor	300 lbs (136 kg)



7130 UltraStar, 3-station available with optional poly bag sealer at 3rd station



7140 UltraStar, 3-station with PBOM bag sealer in 3rd station



7138 UltraStar, 4-station with PBOM bag sealer in 4th station or poly bag sealer in 3rd station and PBOM bag sealer in 4th station

All sales are subject to our prevailing terms and conditions. Illustrations and specifications are subject to change without notice. Machines shown without guards are for illustrative purposes only. Guards are supplied and must be in place before operation.

Thiele Technologies, Inc.

A BARRY-WEHMILLER COMPANY

315 27th Avenue Northeast, Minneapolis, MN 55418 USA • +1 (612) 782-1200
sales@thieletech.com • www.thieletech.com