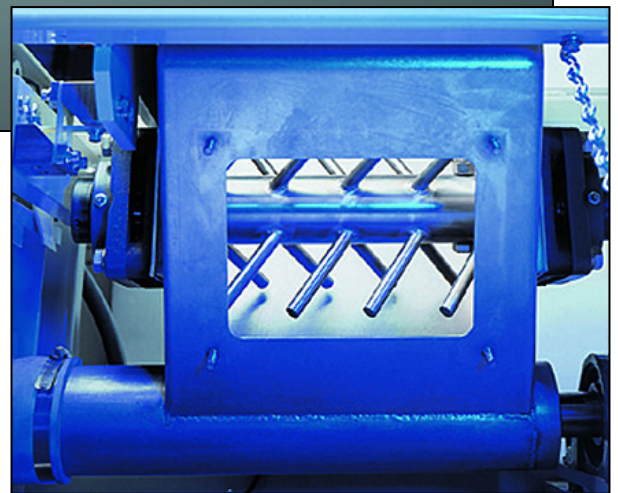


Auger Valve Bag Packer Series 5505



Standard Features:

- Internal auger feed agitators
- Reversing auger
- Non-corrosive, cross-flex beam pivots eliminate wear points and are not effected by debris
- Scale-beam dashpot to dampen vibrations
- NEMA 12 controls
- Choice of supply hoppers to match product characteristics



Barry-Wehmler

Auger Valve Bag Packer Series 5505

The Thiele Series 5505 Auger Valve Bag Packer is a combination feeding, filling, and gross-weighing machine designed for granular, pelleted, dry, and fine powder-type products.

Product moves to the 5505's hopper from a customer-supplied stabilizing bin equipped with level control switches. Bin design is determined by the flow characteristics of a given product.

Three hopper designs are available: a gravity-type "V" hopper for free-flowing products, a small agitator hopper for products that tend to bridge, and a large agitator hopper for hard-to-move products with extreme bridging characteristics. All hoppers are equipped with safety switches and access doors for clean-out.

An auger screw moves the product to the filling spout, on which the operator manually places a paper or plastic bag and sets the manual bag clamp. The operator then pushes the manual start button to cause the product to be augered through the spout into the bag.

A scale utilizing non-corrosive, cross-flex beam pivots senses the weight of the product in the bag. The pivots have no wear points and are not affected by debris. A scale beam dashpot is used to dampen the effects of vibrations.

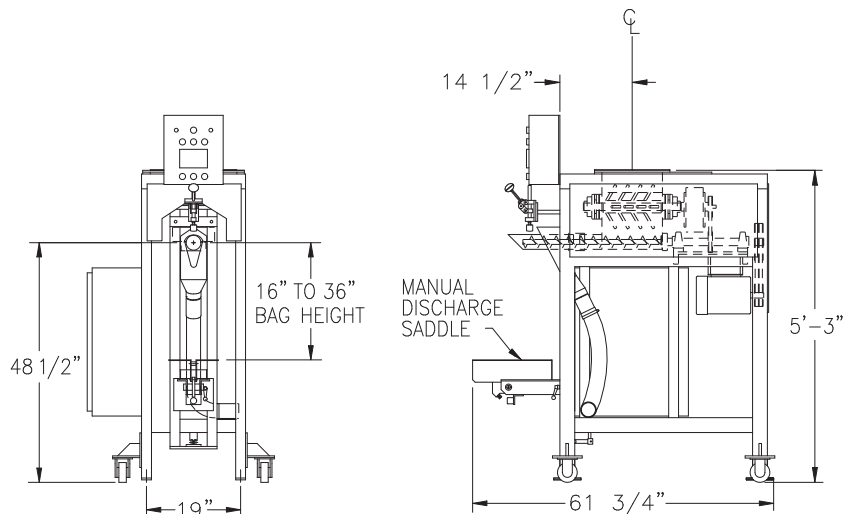
Once the desired weight is reached, the product flow into the bag is stopped and the auger is reversed. The bag is removed and the cycle is repeated as another bag is placed on the spout.

Optional Features Include

- Automatic start switch
- Air-ope rated bag clamp
- Air-operated discharge saddle
- Dust-collection spouting
- Casters
- Electronic load cell
- Coder
- Two-stage weighing
- Valve bag shaker
- Open-mouth bag attachment
- Drum-filling attachment
- Microcomputer

All sales are subject to our prevailing terms and conditions. Illustrations and specifications are subject to change without notice. Machines shown without guards are for illustrative purposes only. Guards are supplied and must be in place before operation.

Specifications	
CAPACITY	
Unit	25 - 110 lbs (10 - 50 kg)
Bag Length	16" to 36" (406 to 914 mm)
DRUM SIZE	
Diameter	10" - 22" (254 - 559 mm)
Height	10" - 22" (254 - 559 mm)
SPEED	
Two to five bags per minute depending on product density, flow characteristics, and type of feed auger.	
ACCURACY	
Typically plus or minus 1 to 4 ounces (28 to 112 grams) at sigma 2. Actual accuracies depend on product flow characteristics, speed, type of weigh system used, and valve bag construction	
SPOUT SIZES	
4-1/2" - 6" (102 - 152 mm) Spout sizes are available for valves	
POWER REQUIREMENTS	
Input Power	240/480 volts, 3 phase, 60 hertz
Control Circuit	115 volts (power through transformer)
Current Draw	240 volt = 8.6 amps, 480 volt = 4.3 amps
AIR REQUIREMENTS	
Operating Pressure	80 psi (5.4 Atm)
Line Pressure	90 psi (6.1 Atm) minimum
Free Air/Cycle	0.15 cu. ft. (4.3 liters) Add 0.07 cu. ft. (2.0 liters) for valve bag shaker
WEIGHT	
Approximately 1,000 lbs (455 kg)	
SHIPPING DIMENSION	
45" x 21" x 82" (1143mm x 533mm x 2083mm)	



Thiele Technologies, Inc.

HQ - Minneapolis, MN • Fergus Falls, MN • Fridley, MN • Reedley, CA
612/782-1200 218/739-3321 763/502-0000 559/638-8484

www.thieletech.com • sales@thieletech.com