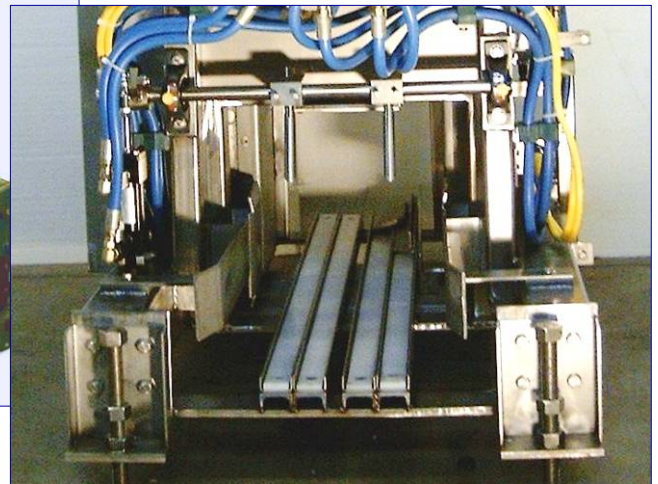


Case Stacker



Features

- Sanitary Design
- Stainless Steel Construction meets strict guidelines
- End of run discharge for partial stacks
- Single or Double Stacker available
- Single Stacker speeds up to 20 cases per minute
- Double Stacker speeds up to 25 cases per minute

Barry-Wehmiller

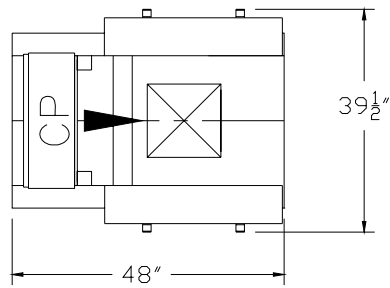
You can choose from two configurations of the Edmeyer Case Stacker, a single stacker or double stacker. Both offer an innovatively simple, efficient clean design, along with stainless steel construction that is guaranteed to optimize your dairy case stacking.

Edmeyer hydraulically operated case stackers can stack up to seven cases high, even in the most severe environments. Plus, the compact, efficient footprint of our case stackers gives you the advantage because they easily integrate into any plant layout you want. You can depend on reliable, trouble-free performance for many years to come from Edmeyer single and double case stackers.

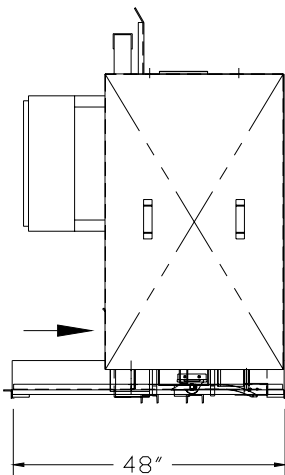
Specifications

Production Speed	Single Stacker: Up to 20 cases per minute Double Stacker: Up to 25 cases per minute
Case Size Range	
Height	11 inches (280 mm)
Width	13 inches (330 mm)
Depth	13 in. to 19 in. (330 mm to 425 mm)
Hydraulic Usage	Single Stacker: .8 gpm per case Double Stacker: .6 gpm per case
Electrical Requirements	110 Volts, single phase, 60 Hz standard

Single Stacker Layout

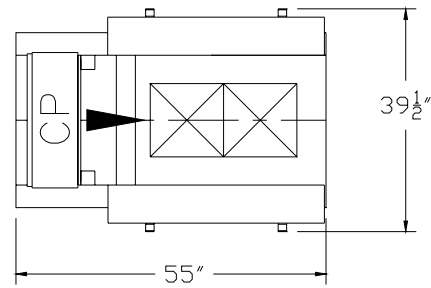


PLAN VIEW

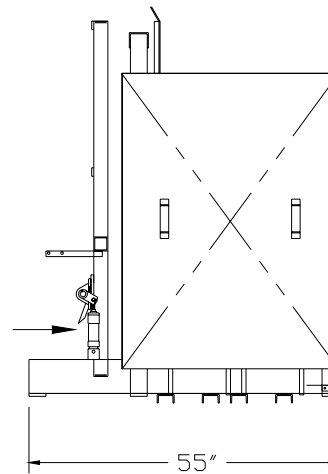


ELEVATION VIEW

Double Stacker Layout



PLAN VIEW



ELEVATION VIEW

All sales are subject to our prevailing terms and conditions. Illustrations and specifications are subject to change without notice. Machines shown without guards are for illustrative purposes only. Guards are supplied and must be in place before installation.

Thiele Technologies, Inc.

A BARRY-WEHMILLER COMPANY
www.thieletech.com
sales@thieletech.com
 edmeyer_case_stacker_7_05

Edmeyer
 315 27th Avenue Northeast
 Minneapolis, MN 55418 USA
 612/782-1200
 Fax 612/782-1209